





# DELTA

## WATER SERVICES



-  Water Meter Sales / Repairing Services
-  Water Tank Cleaning Services
-  Residential & Industrial Plumbing Work
-  Rainwater Harvesting

## INTRODUCTION:

**DELTA WATER SERVICES** was founded by Mr. Nilesh Pawar in 2013 at Pune (MAHARASHTRA).

We will feel proud to announce that we have supplied more than 5 Lacks water meters to Government and Private sector since 2013.

**We are the Dealer & Authorized Stockist of following listed companies.**

- 1) ITRON , 2) ZENNER, 3) CAPSTAN, 4) CHAMBAL, 5) BELANTO
- 6) KRANTI, 7) AQUAMET, 8) ADEPT, 9) KK FLOW

**All Water meters are MJP approved with following standards & Specifications:--**

- IS:779 ISO:4064 Class B.
- 15 to 50 mm Size in Domestic Type Screwed End Water Meter.
- 40 to 1200 mm Size in Woltman Type Flange End Water Meter.
- 50 to 600 mm Size in Woltman Type Flange End Hot Water Meter.

**We are providing following services in all over MAHARASHTRA**

- |  |  |
|--|--|
| Water Meter Sales  | Water Meter Repairing Services         |
| Water Tank Cleaning Services                                   | Residential & Industrial Plumbing Work |
| Rainwater Harvesting, NOC Work                                 | MS piping & fabrication                |
| PCMC House Connection Fitting Material Supply And Installation |  |
| Ready possession Flat Flooring Deep Cleaning & Acid Wash       |  |

## WATER METER SALES:

In many developed countries water meters are used to measure the volume of water used by residential and commercial buildings that are supplied with water by a public water supply system. Water meters can also be used at the water source, well, or throughout a water system to determine flow through a particular portion of the system. In most of the world water meters measure flow in cubic meters (m<sup>3</sup>) or liters but in the USA and some other countries water meters are calibrated in cubic feet (ft.<sup>3</sup>) on a mechanical or electronic register. Some electronic meter registers can display rate-of-flow in addition to total usage.





**Single Jet B Class Water Meter**

Certified - IS. 779:1994 ISO 4064  
Type - Screwed end  
Material - Brass  
Size - 15 MM



**Multi Jet B Class HOT Water Meter**

Certified - IS.779 :1994 ISO: 4064  
Type- Screwed end  
Material - Brass  
Size- 15 MM TO 50 MM  
Temp.- 90°C



**Multi Jet B Class Water Meter**

Certified - IS..779:1994 ISO 4064  
Type- Screwed end  
Material - Brass  
Size- 15 MM TO 50 MM



**Multi Jet B Class PULSE OUTPUT Water Meter**

Certified - IS..779:1994 ISO: 4064  
Type- Screwed end  
Material - Brass  
Size- 15 MM TO 50 MM



**Multi Jet B Class AMR Comperable Water Meter**

Certified - IS..779:1994 ISO 4064  
Type- Screwed end  
Size- 15 MM TO 50 MM



**Multi Jet B Class AMR Water Meter (MID/OIML)**

Certified - IS..779:1994 ISO 4064  
Type- Screwed end  
Size- 15 MM TO 50 MM



**Woltman Type B Class  
Water Meter**

Certified – ISO-4064/1  
Type- Flanged end  
Material – Cast Iron  
Size- 40 MM TO 1200 MM



**Woltman Type B Class PULSE  
OUTPUT Water Meter**

Certified – ISO-4064/1  
Type- Flanged end  
Material – Cast Iron  
Size- 40 MM TO 600 MM  
Temp.- < 45°C



**Woltman Type B Class  
HOT Water Meter**

Certified – ISO-4064/1  
Type- Flanged end  
Material – Cast Iron  
Size- 40 MM TO 600 MM  
Temp.- 90°C



**Woltman Type B Class  
AMR Water Meter**

Certified – ISO-4064/1  
Type- Flanged end  
Material – Cast Iron  
Size- 40 MM TO 600 MM



**Y Type Strainer**

Type- Flanged End  
Material – Cast Iron  
Size- 15 MM TO 300 MM



**MS THREADED FLANGES**



**Y Type Strainer**

Type- Screwed End  
Material – Cast Iron  
Size- 15 MM TO 300 MM



**UPVC ADAPTER FLANGES**



**T Type Strainer**

Type- Flanged End  
Material – Cast Iron  
Size - 40 MM TO 100



**PVC ADAPTER FLANGES**



**Electromagnetic  
Flowmeter**



**Domestic Ultrasonic  
Flowmeter**



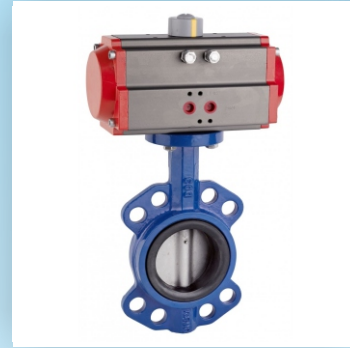
**Clamp -on Wall Mount  
(Flange Ends)  
Ultrasonic Flowmeter**



**Ultrasonic Flowmeter**



**Butterfly Valve**



**Pneumatic Double Acting Actuator**



**Gate Valve**



**Sluice Valve Flanged End**



**Sluice Valve Flanged End**



**Double Chamber Air Valve**



**Single Chamber Air Valve flanged**



**HARIT AIR VALVE**



**Single Wafer Check Valve**



**Ball Check Valve**



**Reflux Valve**



**Ball Type Foot Valve  
Flanged**



**Dual Plate Check Valve**



**Ball type Foot Valve  
Screwed**



**Adaptor Both Side**



**Stop Cock**



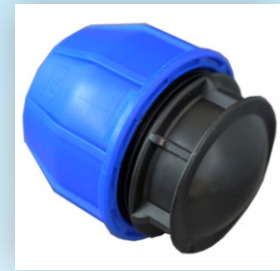
**Elbow Both Side**



**Female Elbow 90  
metal / plastic  
threads**



**Compression Tee**



**End Cap**



**Compression  
Tapping Ferrule**



**Male Adaptor  
Metal / Plastic Threads**



**Tapping Tee  
Electro Fusion**



**Tapping Saddle**



**End Cap**



**Reducer**



**Elbow**



**Coupler**



**Equal Tee**



**Brass Ferrule**



**Y Type Strainer Screwed End**



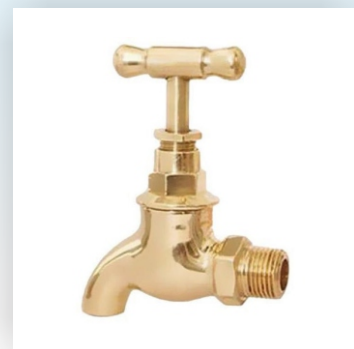
**Brass Ball Valve**



**Non Return Valve**



**Brass Gate Valve**



**Brass Bibcock**



**HDPE PIPE**



**MDPE PIPE**



**UPVC PIPE & Fittings**



**WATER METER  
PROTECTION BOX**



For Dewatering Imported Vacuum Pump or high discharge Pump Is used as per site conditions



High pressure jet with variable Pressure is used for cleaning, corners, walls & base of the tank



Vacuum Sludge Pump is used to dispose the dirty water & sludge from the tank



Specially developed antibacterial agent is spread by high pressure jet throughout water tank to remove various bacteria



A Specialty Developed ultra Violet radiator is used to remove all types of micro organism present in the tank



Ready Possession Flat Flooring Deep Cleaning & Acid Wash

## OUR CLIENTS



DANA INDIA TECHNICAL  
CENTER Pvt. Ltd.



PRIDE PURPLE  
PROPERTIES



AVENUE SUPERMARTS  
LIMITED



TATA  
CONSULTANCY SERVICES



DELTA FLOW



DELTA SARAS PIPING  
Pvt. Ltd.



LEGACY LIFESPACES  
PROPERTIES LLP



D. K. ASSOCIATES



PRABHU ENVIROTEC



RUI INTERIOR Pvt. Ltd.



UNI KLINGER LIMITED



PRIDE GREEN FIELD

# DELTA

## WATER SERVICES

Office :- Shop No.5, Sunshine Plaza, B/11, Bhosari Telco Road,  
Landewadi, Bhosari, Pimpri Chinchwad, Pune- 411 039.

Ph. 992244 9132, 992244 2830, 9922442710.

Web.: [www.deltawatermeters.com](http://www.deltawatermeters.com)

Email.: [info@deltawatermeters.com](mailto:info@deltawatermeters.com), [deltawaterservices03@gmail.com](mailto:deltawaterservices03@gmail.com)